



DIVINE
C A B I N E T R Y

2020 - CATALOG
YOUR BUSINESS PARTNER



Limited 5-Year Warranty

Divine Cabinetry warrants its Designer Series products to be free from defects in material or workmanship for a period of five years. Divine Cabinetry at their choice, may elect to repair or replace any Divine Cabinetry product covered by this warranty.

This warranty does not apply where items have been improperly stored or improperly installed. This warranty does not cover the following: costs of removing warranted material or the installation of replacement material, natural variations and aging inherent in wood, normal wear and tear or damage/defects caused by misuse, abuse, negligence or modification in any way. This warranty does not apply to products purchased without finish.

Divine Cabinetry reserves the right to inspect claimed defective products. No returns, replacements or repairs may be made without prior written consent. Some replacement parts may vary from those originally supplied and are subject to availability.

This warranty is the sole warranty of Divine Cabinetry and in lieu of all other warranties, express implied, including any implied warranty of merchantability and fitness for a particular use. Labor charges for removal of or installation of warranted material as well as incidental or consequential damages are excluded. We do not assume for us any other liability in connection with the sale of your product.

What is not covered by this warranty?

- The natural aging or darkening of wood color, the wood knots, the inherent growth characteristics or variation in wood, We believe this is beauty of nature and not a defect. Absolutely NO RETURN / EXCHANGE for this kind of cabinets or accessories;
- Wear and tear, damage or defects cause by misuse, abuse, negligence, alteration, non-residential use, storage, or use in non-controlled environment (Recommended 35%-55% humidity, temperature range 17-24 °
- Having a heating vent under or in front of cabinets
- Any product used or installed in connection with our products
- This warrants in not qualify for the final sales, clearance sales

Special Door Considerations:

The purchaser agrees to let doors that we warped or have panel shrinkage a 4/1" or less to hang for one season (spring) before replacement is requested. Typically a door will return to its normal position once it is acclimated to temperature and humidity conditions. Prior to requesting a replacement for a door, please be sure the door has been installed properly.

To file a claim on this warranty contact your local authorized Divine Cabinetry dealer.



CLASSIC



A5



D1

S-SERIES



S6



S7





H-SERIES



H2

LIQUIDATION
ASK REP FOR DETAILS

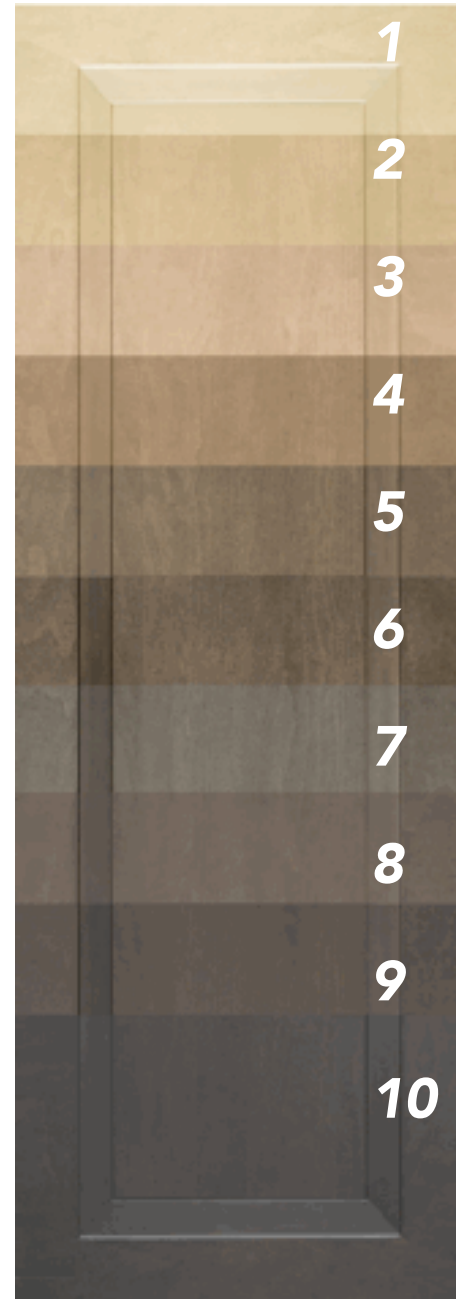


H3

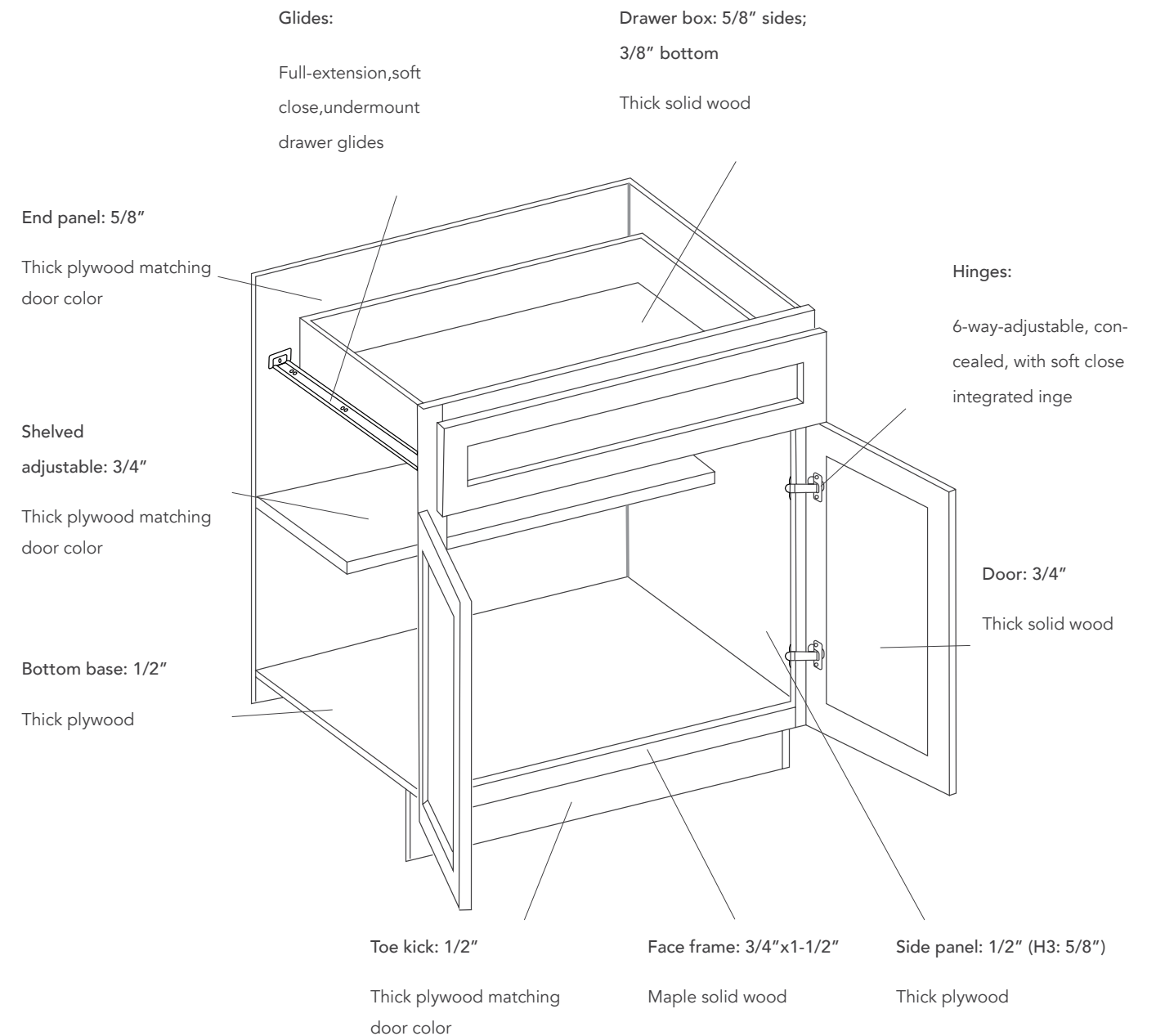


H8 - **NEW**

1. The finest maple wood is sanded until smooth and vacuumed.
2. An equalizer stain is applied to balance the base color of the wood.
3. A toner is applied to establish color uniformity.
4. A deep penetrating stain is then applied to reveal the hidden beauty of the natural grain.
5. All stained surfaces are then hand-rubbed and wiped if excess stain, and then slowly air-dried.
6. A wood sealer is then applied, penetrating all exposed wood surfaces for unifor protection.
7. All surface are then hand-sanded, providing a smooth, consistent surface.
8. A glaze is spplied by hand (if applicable).
9. A color consistency examination is performed with additional touch-up if needed.
10. A final protective top coat is applied. maximizing resistance to scuffing, moisture, fading and most household chemicals.



CABINET DIMENSION - ORIGINAL



- Interiors - Finish matching the doors
- Soft Close System - All cabinets come standard with soft close doors and drawer glides

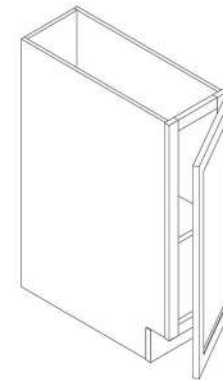


BASE CABINET

Original



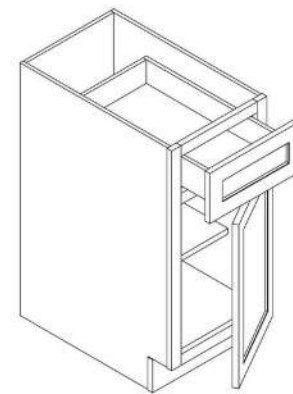
BASE CABINET



ITEM CODE	DIMENSIONS	MSRP
B09	9Wx34-1/2Hx24D	316

- One adjustable shelf

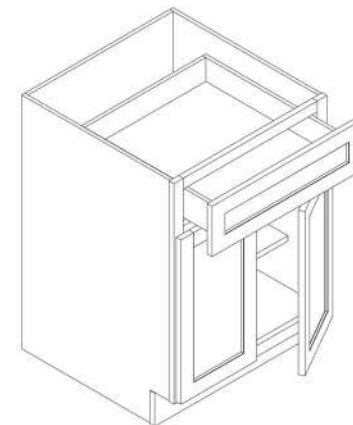
BASE CABINET WITH ONE DRAWER AND ONE DOOR



ITEM CODE	DIMENSIONS	MSRP
B09	12Wx34-1/2Hx24D	365
B15	15Wx34-1/2Hx24D	421
B18	18Wx34-1/2Hx24D	450
B21	21Wx34-1/2Hx24D	500

- One adjustable shelf

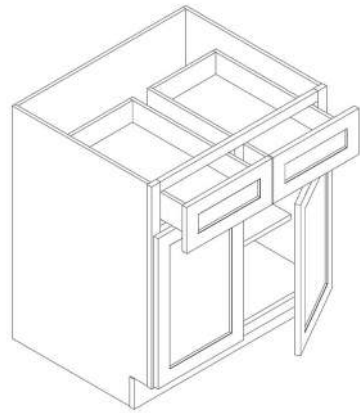
BASE CABINET WITH ONE DRAWER AND TWO DOORS



ITEM CODE	DIMENSIONS	MSRP
B24	24Wx34-1/2Hx24D	559
B27	27Wx34-1/2Hx24D	641
B30	30Wx34-1/2Hx24D	758

- One adjustable shelf

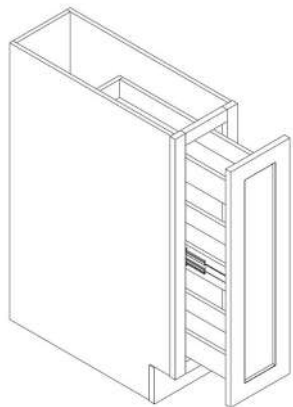
BASE CABINET WITH TWO DRAWERS AND TWO DOORS



ITEM CODE	DIMENSIONS	MSRP
B33	33Wx34-1/2Hx24D	793
B36	36Wx34-1/2Hx24D	827
B39	39Wx34-1/2Hx24D	951
B42	42Wx34-1/2Hx24D	884

- One adjustable shelf

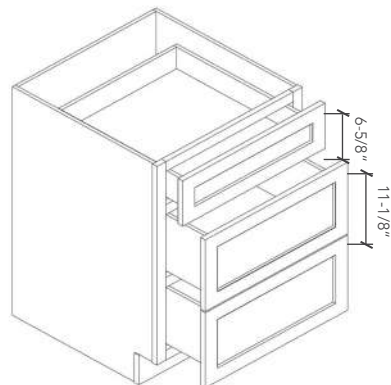
SPICE RACK CABINET



ITEM CODE	DIMENSIONS	MSRP
SP09	9Wx34-1/2Hx24D	359
SP12	12Wx34-1/2Hx24D	486

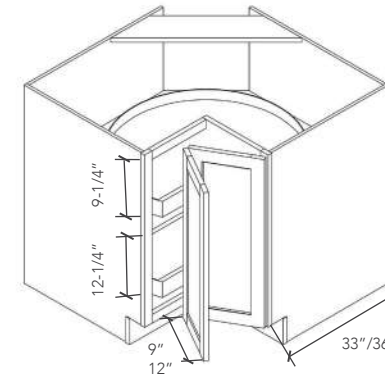
- Three wooden shelves

DRAWER BASE CABINET WITH ONE SMALL DRAWER AND TWO LARGE DRAWERS



ITEM CODE	DIMENSIONS	MSRP
DB12-3	12Wx34-1/2Hx24D	531
DB15-3	15Wx34-1/2Hx24D	577
DB18-3	18Wx34-1/2Hx24D	629
DB21-3	21Wx34-1/2Hx24D	679
DB24-3	24Wx34-1/2Hx24D	732
DB30-3	30Wx34-1/2Hx24D	839
DB36-3	36Wx34-1/2Hx24D	946

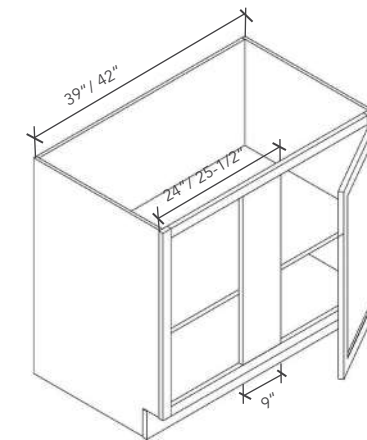
LAZY SUSAN



ITEM CODE	DIMENSIONS	MSRP
LS3309	33Wx34-1/2Hx24D	1,014
LS3612	36Wx34-1/2Hx24D	1,088
S-LS33		68
S-LS36		78

- One Bi-folding door
- Two wooden lazy susans
- S-LS33, S-LS36: Nature wood vanished lazy susan shelf

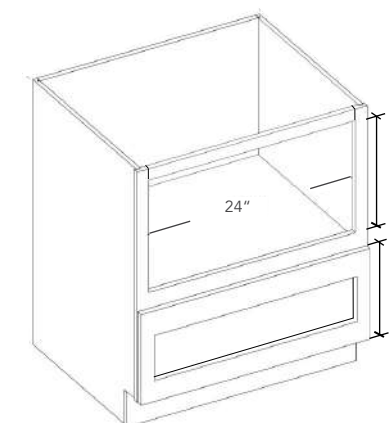
BASE BLIND CORNER CABINET WITH ONE DOOR



ITEM CODE	DIMENSIONS	MSRP
BBC39	39Wx34-1/2Hx24D	698
BBC42	42Wx34-1/2Hx24D	779

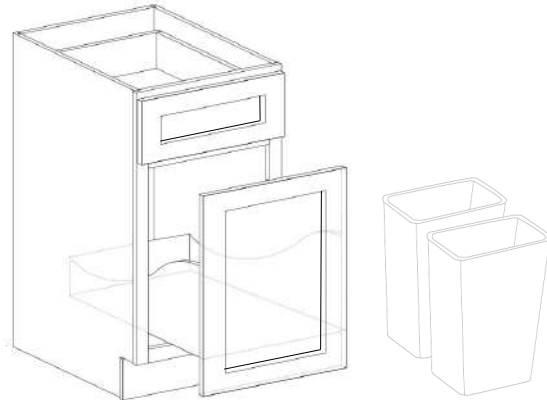
- One adjustable shelf
- *Min. 3" pull from the wall required

MICROWAVE DRAWER BASE - **NEW**



ITEM CODE	DIMENSIONS	MSRP
BBL27	27Wx34-1/2Hx24D	780

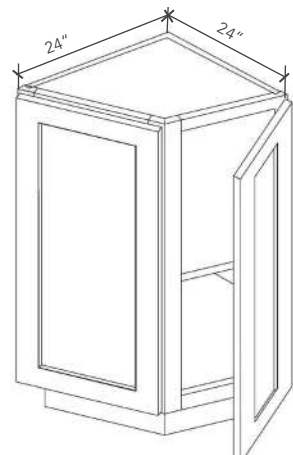
WASTE BIN BASE CABINET WITH ONE DOOR AND ONE DRAWER - **NEW**



ITEM CODE	DIMENSIONS	MSRP
BWBK18-2	18Wx34-1/2Hx24D	645

- Two plastic waste bins are included

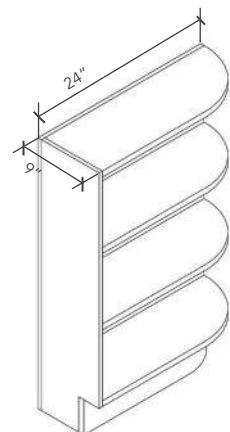
BASE END CORNER CABINET WITH TWO DOORS



ITEM CODE	DIMENSIONS	MSRP
BEC24	24Wx34-1/2Hx24D	769

- One adjustable shelf

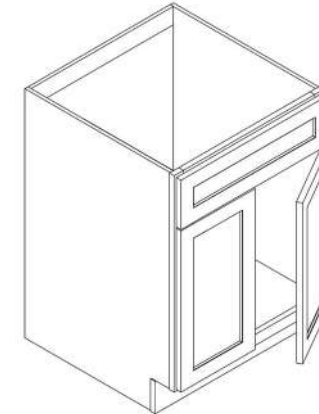
BASE END SHELF



ITEM CODE	DIMENSIONS	MSRP
BES09	9Wx34-1/2Hx24D	427

- Three fixed shelf
- Universal design for left and right

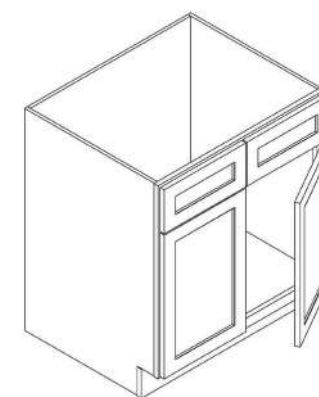
SINK BASE CABINET



ITEM CODE	DIMENSIONS	MSRP
SB24	24Wx34-1/2Hx24D	602
SB27	27Wx34-1/2Hx24D	635
SB30	30Wx34-1/2Hx24D	635

- One fixed fake drawer / tip-out
- Two doors and no shelf
- Tip-out accessory (TOA) not include

SINK BASE CABINET



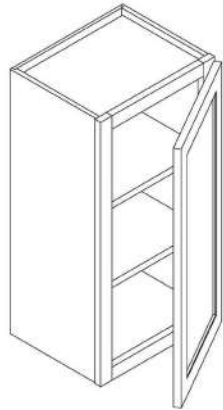
ITEM CODE	DIMENSIONS	MSRP
SB33	33Wx34-1/2Hx24D	661
SB36	36Wx34-1/2Hx24D	687
SB39	39Wx34-1/2Hx24D	736
SB42	42Wx34-1/2Hx24D	747

- Two fixed fake drawers / tip-out
- Two doors and no shelf
- Tip-out accessories (TOA) are included

W A L L C A B I N E T
P A N T R Y



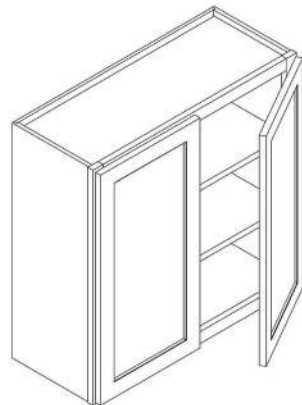
30" HIGH WALL CABINET WITH ONE DOOR



ITEM CODE	DIMENSIONS	MSRP
W0930	9Wx30Hx12D	212
W1230	12Wx30Hx12D	255
W1530	15Wx30Hx12D	306
W1830	18Wx30Hx12D	324
W2130	21Wx30Hx12D	382

- Two adjustable shelves

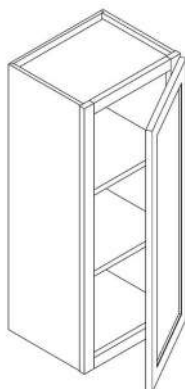
30" HIGH WALL CABINET WITH TWO DOORS



ITEM CODE	DIMENSIONS	MSRP
W2430	24Wx30Hx12D	405
W2730	27Wx30Hx12D	454
W3030	30Wx30Hx12D	503
W3330	33Wx30Hx12D	530
W3630	36Wx30Hx12D	553
W3930	39Wx30Hx12D	586
W4230	42Wx30Hx12D	605

- Two adjustable shelves

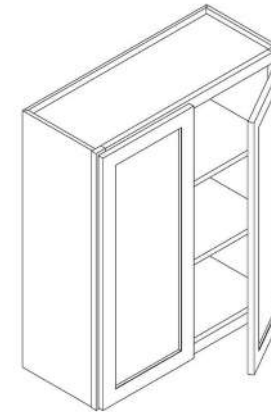
36" HIGH WALL CABINET WITH ONE DOOR



ITEM CODE	DIMENSIONS	MSRP
W0936	9Wx36Hx12D	247
W1236	12Wx36Hx12D	290
W1536	15Wx36Hx12D	339
W1836	18Wx36Hx12D	361
W2136	21Wx36Hx12D	418

- Two adjustable shelves

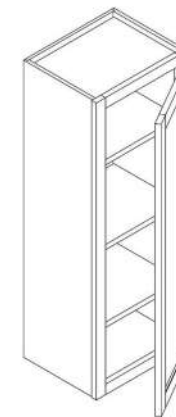
36" HIGH WALL CABINET WITH TWO DOORS



ITEM CODE	DIMENSIONS	MSRP
W2436	24Wx36Hx12D	442
W2736	27Wx36Hx12D	488
W3036	30Wx36Hx12D	566
W3336	33Wx36Hx12D	592
W3636	36Wx36Hx12D	620
W3936	39Wx36Hx12D	740
W4236	42Wx36Hx12D	703

- Two adjustable shelves

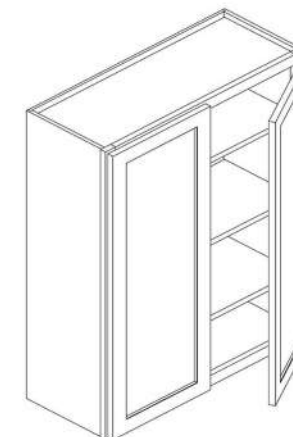
42" HIGH WALL CABINET WITH ONE DOOR



ITEM CODE	DIMENSIONS	MSRP
W0942	9Wx42Hx12D	281
W1242	12Wx42Hx12D	324
W1542	15Wx42Hx12D	370
W1842	18Wx42Hx12D	393
W2142	21Wx42Hx12D	448

- Three adjustable shelves

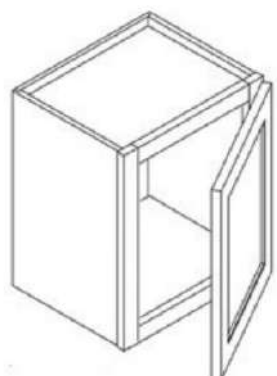
42" HIGH WALL CABINET WITH TWO DOORS



ITEM CODE	DIMENSIONS	MSRP
W2442	24Wx42Hx12D	511
W2742	27Wx42Hx12D	543
W3042	30Wx42Hx12D	628
W3342	33Wx42Hx12D	648
W3642	36Wx42Hx12D	690
W3942	39Wx42Hx12D	848
W4242	42Wx42Hx12D	799

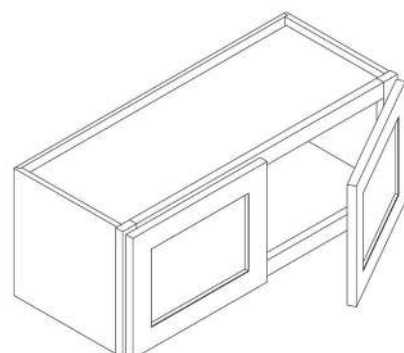
- Three adjustable shelves

12" HIGH WALL CABINET WITH ONE DOOR AND NO SHELF



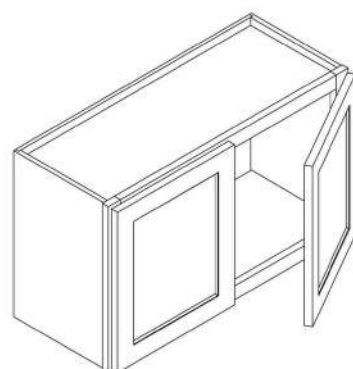
ITEM CODE	DIMENSIONS	MSRP
W1212	12Wx12Hx12D	363
W1512	15Wx12Hx12D	396
W1812	18Wx12Hx12D	428
W2112	21Wx12Hx12D	461

12" HIGH WALL CABINET WITH TWO DOORS AND NO SHELF



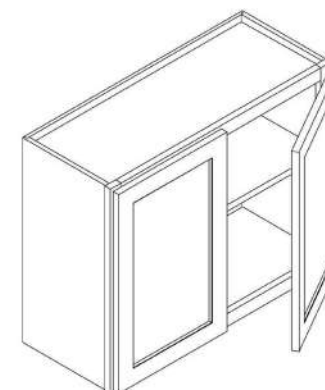
ITEM CODE	DIMENSIONS	MSRP
W2412	24Wx12Hx12D	493
W2712	27Wx12Hx12D	526
W3012	30Wx12Hx12D	287
W3612	36Wx12Hx12D	341

15"/18" HIGH WALL CABINET WITH TWO DOORS AND NO SHELF



ITEM CODE	DIMENSIONS	MSRP
W3015	30Wx15Hx12D	306
W3315	33Wx15Hx12D	372
W3615	36Wx15Hx12D	379
W3018	30Wx18Hx12D	344
W3618	36Wx18Hx12D	395

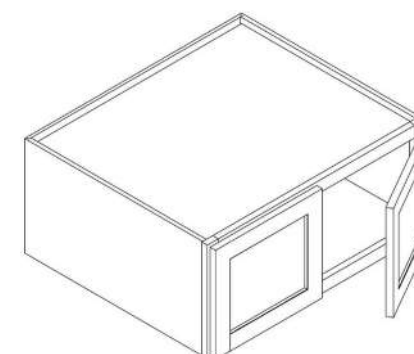
21"/24" HIGH WALL CABINET WITH TWO DOORS



ITEM CODE	DIMENSIONS	MSRP
W3021	30Wx21Hx12D	361
W3321	33Wx21Hx12D	419
W3024	30Wx24Hx12D	399
W3624	36Wx24Hx12D	491

- 21" high without adjustable shelf
- 24" high with one adjustable shelf

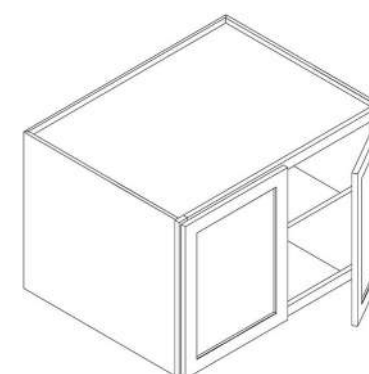
12"/15"/ 18" HIGH REFRIGERATOR WALL CABINET WITH TWO DOORS AND NO SHELF



ITEM CODE	DIMENSIONS	MSRP
W331227	33Wx12Hx27D	482
W361227	36Wx12Hx27D	530
W361527	36Wx15Hx27D	569
W331827	33Wx18Hx27D	530
W361827	36Wx18Hx27D	608

- Depth 27"

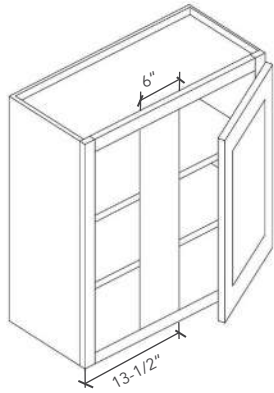
21"/24" HIGH REFRIGERATOR WALL CABINET WITH TWO DOORS AND ONE SHELF



ITEM CODE	DIMENSIONS	MSRP
W362127	36Wx21Hx27D	632
W332427	33Wx24Hx27D	669
W362427	36Wx24Hx27D	641

- One adjustable shelf
- Depth 27"

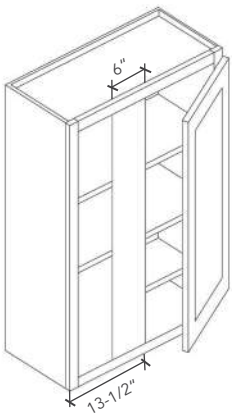
30"/36" HIGH WALL BLIND CORNER CABINET WITH ONE DOOR



ITEM CODE	DIMENSIONS	MSRP
WBC2730	27Wx30Hx12D	381
WBC2736	27Wx36Hx12D	456

- Two adjustable shelves
- Adjustable door left or right
- *Min 1 1/2"-3" pull from the wall required

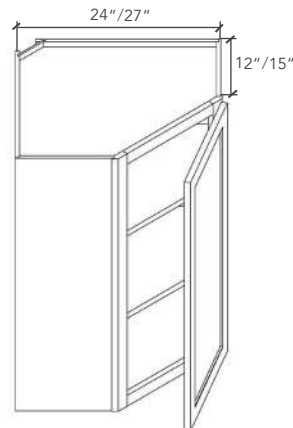
42" HIGH WALL BLIND CORNER CABINET WITH ONE DOOR



ITEM CODE	DIMENSIONS	MSRP
WBC2742	27Wx42Hx12D	524

- Three adjustable shelves
- Adjustable door left or right
- *Min 1 1/2"-3" pull from the wall required

30"/36" HIGH WALL DIAGONAL CORNER CABINET WITH ONE DOOR



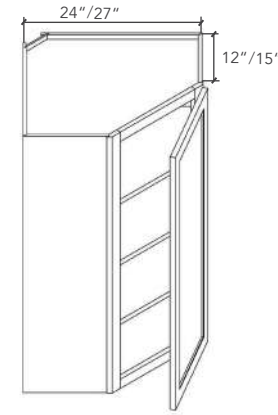
ITEM CODE	DIMENSIONS	MSRP
WDC2430	24Wx30Hx12D	502
WDC2436	24Wx36Hx12D	563

- Two adjustable shelves
- Depth 12"

ITEM CODE	DIMENSIONS	MSRP
WDC273615	27Wx36Hx15D	669

- Two adjustable shelves
- Depth 15"

42" HIGH WALL DIAGONAL CORNER CABINET WITH ONE DOOR



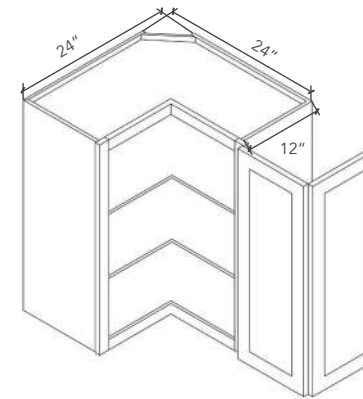
ITEM CODE	DIMENSIONS	MSRP
WDC2442	24Wx42Hx12D	625

- Three adjustable shelves
- Depth 12"

ITEM CODE	DIMENSIONS	MSRP
WDC274215	27Wx42Hx15D	729

- Three adjustable shelves
- Depth 15"

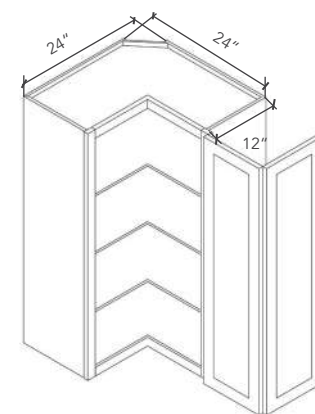
30"/36" HIGH TOP LAZY SUSAN



ITEM CODE	DIMENSIONS	MSRP
SCW243024	24Wx30Hx24D	914
SCW243624	24Wx36Hx24D	993

- One bi-folding door
- Two adjustable shelves

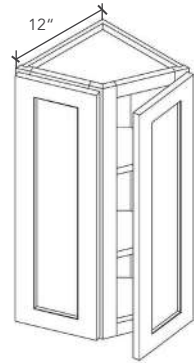
42" HIGH TOP LAZY SUSAN



ITEM CODE	DIMENSIONS	MSRP
SCW244224	24Wx42Hx24D	947

- One bi-folding door
- Three adjustable shelves

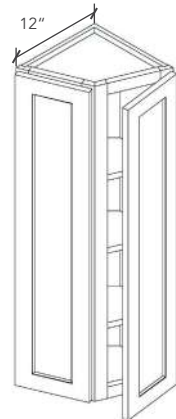
30"/36" HIGH WALL END CORNER CABINET WITH TWO DOORS



ITEM CODE	DIMENSIONS	MSRP
WEC1230	12Wx30Hx12D	315
WEC1236	12Wx36Hx12D	355

- Two adjustable shelves

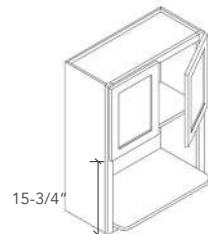
42" HIGH WALL END CORNER CABINET WITH TWO DOORS



ITEM CODE	DIMENSIONS	MSRP
WEC1242	12Wx42Hx12D	387

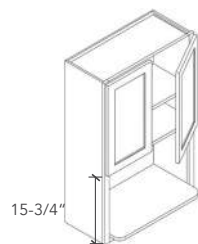
- Three adjustable shelves

MICROWAVE CABINET WITH TWO DOORS



ITEM CODE	DIMENSIONS	MSRP
WBL2730	27Wx30Hx12D	579
WBL2736	27Wx36Hx12D	600

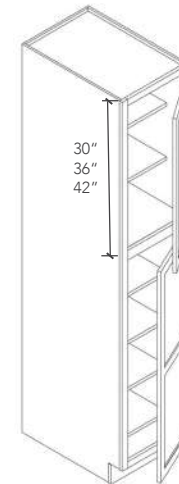
- No shelf
- Bottom shelf depth: 18"



ITEM CODE	DIMENSIONS	MSRP
WBL2742	27Wx42Hx12D	637

- One shelf
- Bottom shelf depth: 18"

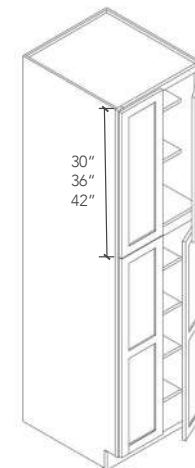
PANTRY WITH TWO DOORS



ITEM CODE	DIMENSIONS	MSRP
WP188427	18Wx84Hx27D	1,416
WP189027	18Wx90Hx27D	1,442
WP189627	18Wx96Hx27D	1,478

- High 84" & 90" with five adjustable shelves
- High 96" with six adjustable shelves

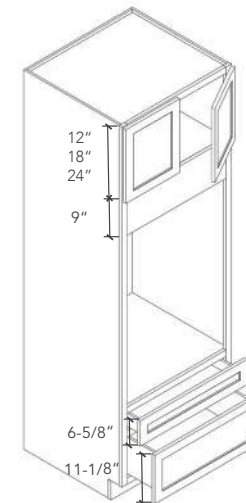
PANTRY WITH FOUR DOORS



ITEM CODE	DIMENSIONS	MSRP
WP248427	24Wx84Hx27D	1,481
WP249027	24Wx90Hx27D	1,507
WP249627	24Wx96Hx27D	1,544
WP308427	30Wx84Hx27D	1,511
WP309027	30Wx90Hx27D	1,553
WP309627	30Wx96Hx27D	1,585

- High 84" & 90" with five adjustable shelves
- High 96" with six adjustable shelves

SINGLE OVEN PANTRY WITH TWO DOORS



ITEM CODE	DIMENSIONS	MSRP
OC308427	30Wx84Hx27D	1,325
OC309027	30Wx90Hx27D	1,410
OC309627	30Wx96Hx27D	1,528

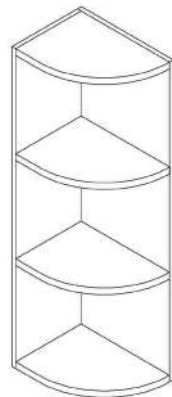
- Two drawers
- Opening 40"x27", can be altered for double oven
- Cut out width max 28.5"



DECOR MOLDING

OTHERS

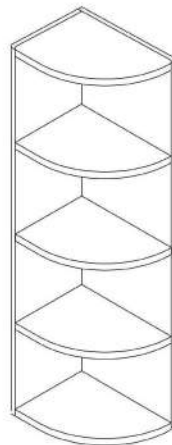
30"/36" HIGH WALL END SHELF



ITEM CODE	DIMENSIONS	MSRP
WES0930	9Wx30Hx12D	235
WES0936	9Wx36Hx12D	258

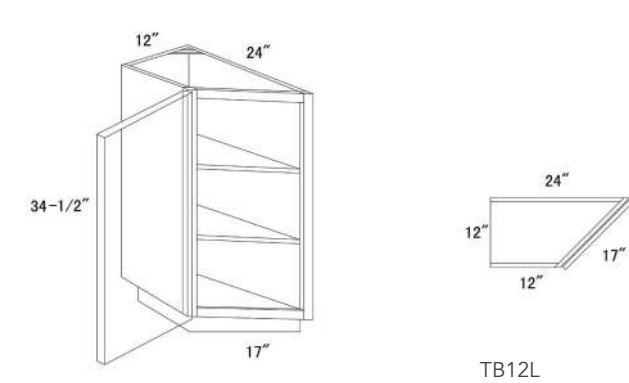
- Two fixed shelves

42" HIGH WALL END SHELF



ITEM CODE	DIMENSIONS	MSRP
WES0942	9Wx42Hx12D	293

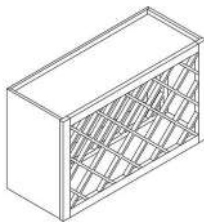
- Three fixed shelves



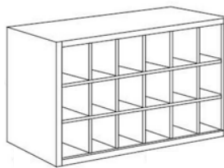
ITEM CODE	DIMENSIONS	MSRP
TB12L	12Wx34-1/2Hx24D	859
TB12R	12Wx34-1/2Hx24D	859

- L-Hinge left / R-Hinge right

WINE RACK



AVAILABLE:
H2,D1,A5,S6,S7



AVAILABLE:
H2,H3,H8,S6,S7

ITEM CODE	DIMENSIONS	MSRP
30WR	30Wx15Hx12D	275

ITEM CODE	DIMENSIONS	MSRP
30WRS	30Wx15Hx12D	275

GLASS RACK

ITEM CODE	DIMENSIONS	MSRP
30GR	30Wx1-1/2Hx12D	124

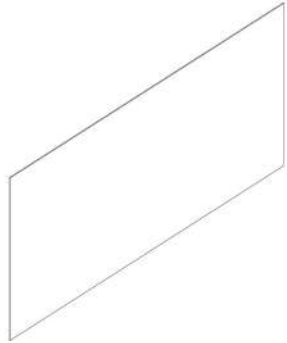


TOE KICK



ITEM CODE	DIMENSIONS	MSRP
TK8	4-1/2Wx96Hx1/8D	42

BACK PANEL



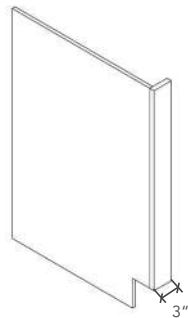
ITEM CODE	DIMENSIONS	MSRP
BP9636	96Hx36D	158

- Panel thickness 1/8"
- Edge not finished

ITEM CODE	DIMENSIONS	MSRP
BP9636-1/2	96Hx36D	207

- Panel thickness 1/2"
- Edge not finished

DISHWASHER RETURN PANEL



ITEM CODE	DIMENSIONS	MSRP
DWR	3Wx34-1/4Hx24D	140

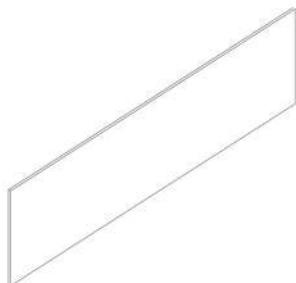
FRIDGE RETURN PANEL



ITEM CODE	DIMENSIONS	MSRP
RRP8427	84Hx27D	209
RRP9027	90Hx27D	220
RRP9627	96Hx27D	237

- Filler width 1 1/2"
- Panel thickness 1/2"

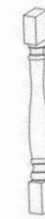
FRIDGE PANEL



ITEM CODE	DIMENSIONS	MSRP
REP9627	96Hx27D	299

- Panel thickness 3/4"
- Edge finished

TURN POST



TP3

AVAILABLE:
H2,D1,A5,S6,S7

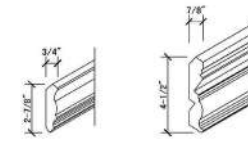


TP3S

AVAILABLE:
H2,H3,H8,S6,S7

ITEM CODE	DIMENSIONS	MSRP
TP3	3Wx34-1/4Hx3D	263
TP3S	3Wx36Hx3D	473

TRADITIONAL CROWN MOLDING



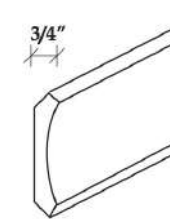
CM2-1/2

CM4-1/2

AVAILABLE:
H2,D1,A5,S6,S7

ITEM CODE	DIMENSIONS	MSRP
CM2-1/2	2-1/2Wx96Hx3/4D	91
CM4-1/2	4-1/2Wx96Hx7/8D	240

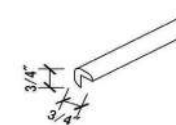
MODERN CROWN MOLDING



AVAILABLE:
H2,H3,H8,S6,S7

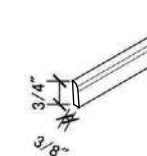
ITEM CODE	DIMENSIONS	MSRP
CM2-1/2S	2-1/2Wx96Hx3/4D	91
CM4-1/2S	4-1/2Wx96Hx3/4D	240

OUTSIDE CORNER MOLDING



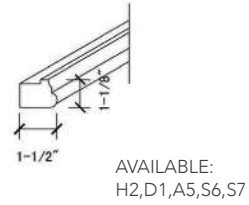
ITEM CODE	DIMENSIONS	MSRP
OCM8	3/4Wx96Hx3/4D	68

SCRIBE MOLDING



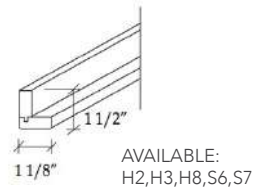
ITEM CODE	DIMENSIONS	MSRP
SM8	3/4Wx96Hx1/4D	30

TRADITIONAL LIGHT MOLDING



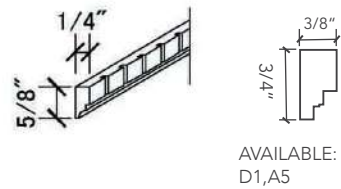
ITEM CODE	DIMENSIONS	MSRP
TLR8	1-1/2Wx96Hx1-1/8D	134

MODERN LIGHT MOLDING



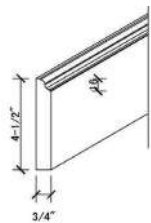
ITEM CODE	DIMENSIONS	MSRP
TLR8-S	1-1/2Wx96Hx1-1/8D	134

DENTIL MOLDING



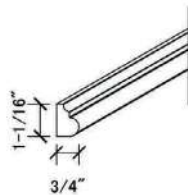
ITEM CODE	DIMENSIONS	MSRP
DM8	3/4Wx96Hx1/4D	50

BASE MOLDING



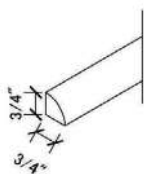
ITEM CODE	DIMENSIONS	MSRP
BM8	4-1/2Wx96Hx3/4D	177

CHAIR RAIL MOLDING



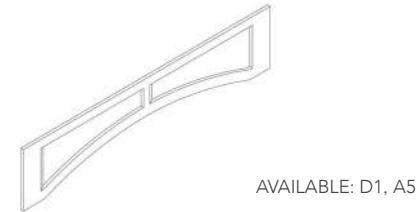
ITEM CODE	DIMENSIONS	MSRP
CR8	1Wx96Hx3/4D	50

QUARTER ROUND



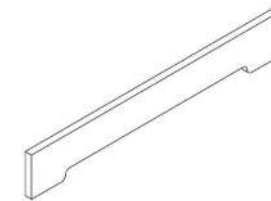
ITEM CODE	DIMENSIONS	MSRP
QR8	3/4Wx96Hx3/4D	68

VALANCE



ITEM CODE	DIMENSIONS	MSRP
RPV36	36Wx9Hx3/4D	172
RPV42	42Wx9Hx3/4D	196

ARCHED VALANCE



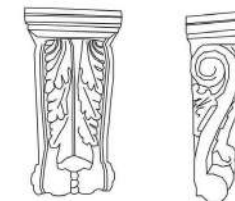
ITEM CODE	DIMENSIONS	MSRP
V36B	36Wx5-1/2Hx3/4D	107
V42B	42Wx5-1/2Hx3/4D	118
V48B	48Wx5-1/2Hx3/4D	123
V60B	60Wx5-1/2Hx3/4D	151

CORBEL



SC3107

AVAILABLE: H2,H3,H8,S6,S7



RC5103

D1,A5

ITEM CODE	DIMENSIONS	MSRP
SC3107	2-1/2Wx10Hx7D	299
RC5103	4-3/4Wx9-1/4Hx3D	280

OVERLAY



AVAILABLE: D1,A5

ITEM CODE	DIMENSIONS	MSRP
OLSM	15-1/4Wx3-1/4Hx1/2D	209
OLLG	24Wx5Hx3/4D	216

WALL FILLER



ITEM CODE	DIMENSIONS	MSRP
WF330	3Wx30Hx3/4D	39
WF336	3Wx36Hx3/4D	42
WF342	3Wx42Hx3/4D	48
WF630	6Wx30Hx3/4D	66
WF636	6Wx36Hx3/4D	73
WF642	6Wx42Hx3/4D	82

TALL FILLER



ITEM CODE	DIMENSIONS	MSRP
TF1-1/2X96	1-1/2Wx96Hx3/4D	78
TF3X96	3Wx96Hx3/4D	104
TF6X96	6Wx96Hx3/4D	207

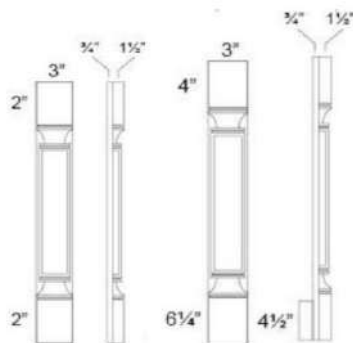
FULTED WALL FILLER



AVAILABLE:
D1,A5

ITEM CODE	DIMENSIONS	MSRP
W330F	3Wx30Hx3/4D	42
W336F	3Wx36Hx3/4D	49
W342F	3Wx42Hx3/4D	56

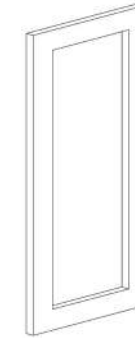
FULTED WALL FILLER



AVAILABLE:
H2,H3,H8,S6,S7

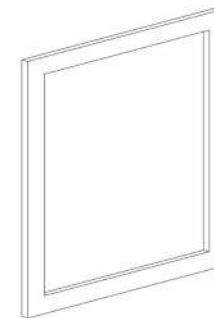
ITEM CODE	DIMENSIONS	MSRP
W330FS	3Wx30Hx2-1/4D	253
W336FS	3Wx36Hx2-1/4D	293
W342FS	3Wx42Hx2-1/4D	329

WALL DUMMY DOOR



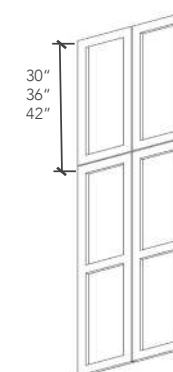
ITEM CODE	DIMENSIONS	MSRP
W1230F	12Wx30Hx3/4D	99
W1236F	12Wx36Hx3/4D	116
W1242F	12Wx42Hx3/4D	134
W1530F	15Wx30Hx3/4D	155
W1830F	18Wx30Hx3/4D	150

BASE DUMMY DOOR



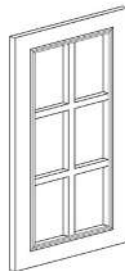
ITEM CODE	DIMENSIONS	MSRP
BDD24	24Wx30Hx3/4D	198

PANTRY DUMMY DOOR WITH FOUR DOORS



ITEM CODE	DIMENSIONS	MSRP
BDD8427	84Hx27Dx3/4D	612
BDD9027	90Hx27Dx3/4D	657
BDD9627	96Hx27Dx3/4D	704

GLASS DOOR



AVAILABLE: D1 A5



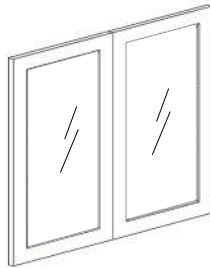
H2, H3, H8, S6, S7

ITEM CODE	DIMENSIONS	MSRP
WDC2430GD	24Wx30Hx3/4D	152
WDC2436GD	24Wx36Hx3/4D	184
WDC2442GD	24Wx42Hx3/4D	216

GLASS DOOR



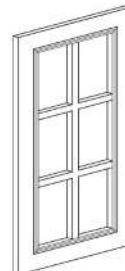
AVAILABLE: D1 A5



H2, H3, H8, S6, S7

ITEM CODE	DIMENSIONS	MSRP
W3030BGD	30Wx30Hx3/4D	305
W3036BGD	30Wx36Hx3/4D	368
W3042BGD	30Wx42Hx3/4D	432

GLASS DOOR



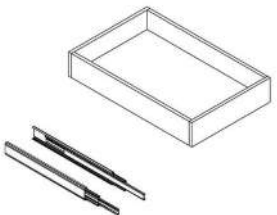
AVAILABLE: D1 A5



H2, H3, H8, S6, S7

ITEM CODE	DIMENSIONS	MSRP
W1530GD	15Wx30Hx3/4D	152
W1830GD	18Wx30Hx3/4D	184
W1536GD	15Wx36Hx3/4D	184
W1836GD	18Wx36Hx3/4D	222
W1542GD	15Wx42Hx3/4D	216
W1842GD	18Wx42Hx3/4D	260

ROLL-OUT DRAWER (COMMON PRODUCT)



ITEM CODE	DIMENSIONS	MSRP
RD15	15Wx3-3/8Hx21D	131
RD18	18Wx3-3/8Hx21D	151
RD24	24Wx3-3/8Hx21D	177
RD30	30Wx3-3/8Hx21D	206
RD36	36Wx3-3/8Hx21D	229

- For cabinet depth min 24"
- Capable for pantry cabinets

TOUCH-UP KIT



ITEM CODE	DIMENSIONS	MSRP
TUK		40

- Water and wax stick

SINK BASE TIP-OUT ACCESSORIES (COMMON PRODUCT)



ITEM CODE	DIMENSIONS	MSRP
TOK		30



C L A S S I C S E R I E S

S H O W R O O M

AVAILABLE:



S6



S7

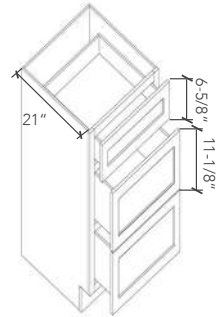


H3
AUGUST



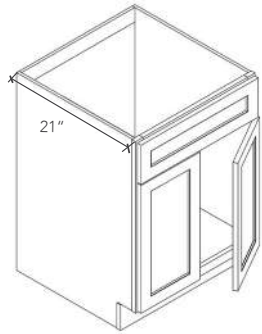
H8
AUGUST

VANITY WITH THREE DRAWERS - **NEW**



ITEM CODE	DIMENSIONS	MSRP
VDB12	12Wx34Hx21D	535
VDB15	15Wx34Hx21D	570

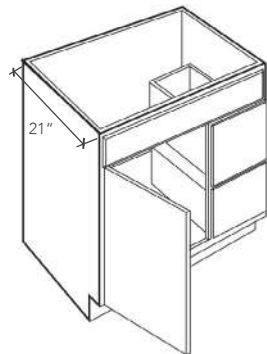
VANITY WITH TWO DOORS - **NEW**



ITEM CODE	DIMENSIONS	MSRP
VSB24	24Wx34Hx21D	440
VSB30	30Wx34Hx21D	493

- One fixed fake drawer / tip-out
- No shelf
- Tip-out accessory (TOA) not include

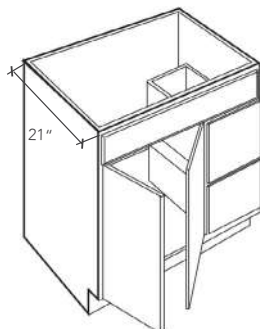
VANITY WITH ONE DOOR AND TWO DRAWERS



ITEM CODE	DIMENSIONS	MSRP
VSD30L	30Wx34Hx21D	640
VSD30R	30Wx34Hx21D	640

- Door 18"W; Drawers 12"W
- L/R: drawer on the left/right
- No shelf

VANITY WITH TWO DOORS AND TWO DRAWERS



ITEM CODE	DIMENSIONS	MSRP
VSD36L	36Wx34Hx21D	734
VSD36R	36Wx34Hx21D	734

- Door 12"W; Drawers 12"W
- L/R: drawer on the left/right
- No shelf

SAMPLE DOOR

SAMPLE
DOOR



ITEM CODE	DIMENSIONS	MSRP
SD	12Wx15H	15

BIG SAMPLE
DOOR



ITEM CODE	DIMENSIONS	MSRP
BSD	13-1/4Wx24-3/4H	25
BSD	13-1/4Wx29-1/2H	25

DRAWER
BIG SAMPLE
DOOR



ITEM CODE	DIMENSIONS	MSRP
BDSD	15Wx24-1/4H	30

SMAPLE DOOR RACK



ITEM CODE	DIMENSIONS	MSRP
DPSR	14-1/2Wx72-1/2Hx16D	85

SAMPLE MOLDING



ITEM CODE	DIMENSIONS	MSRP
MSK		20



SINK

UNDERMOUNT

CUC2318



CUC3018



CUC3118



CUC3220



HANDMADE

CUHM2318



CUHM2818



CUHM3018



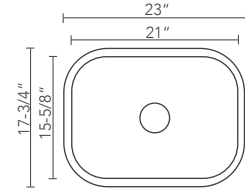
CUHM3018D



CUHM3218D

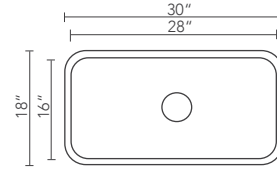


NEW



ITEM CODE	CUC 2318		
DIMENSION	23"x17-3/4"		
BOWL DEPTH	9 Inch	SIPHON HOLE	3-1/2"
CABINET SIZE	26 Inch	THICKNESS	18 Gauge
FINISHING	Brushed	MSRP	215

- PRICE INCLUDE STRAINER



ITEM CODE	CUC 3018		
DIMENSION	30"x18"		
BOWL DEPTH	9 Inch	SIPHON HOLE	3-1/2"
CABINET SIZE	33 Inch	THICKNESS	18 Gauge
FINISHING	Brushed	MSRP	268

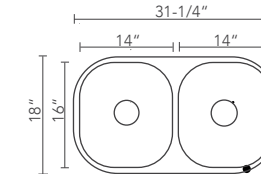
- PRICE INCLUDE STRAINER



NEW

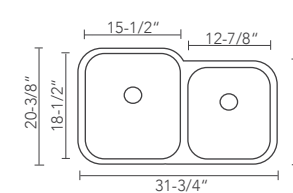


ITEM CODE: CUC 3220



ITEM CODE	CUC 3118		
DIMENSION	31-1/4"x18"		
BOWL DEPTH	9 Inch	SIPHON HOLE	3-1/2"
CABINET SIZE	33 Inch	THICKNESS	18 Gauge
FINISHING	Brushed	MSRP	268

- PRICE INCLUDE STRAINER



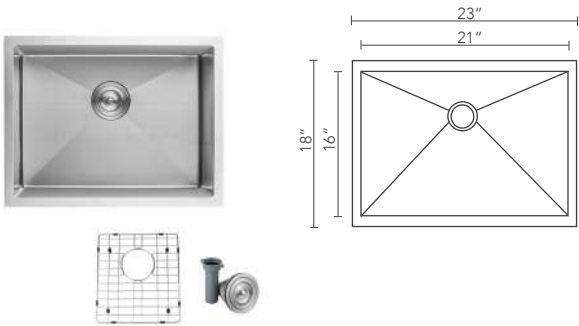
ITEM CODE	CUC 3220		
DIMENSION	31-3/4"x20-3/8"		
BOWL DEPTH	9 Inch / 8 Inch	SIPHON HOLE	3-1/2"
CABINET SIZE	33 Inch	THICKNESS	18 Gauge
FINISHING	Brushed	MSRP	268

- PRICE INCLUDE STRAINER

NEW

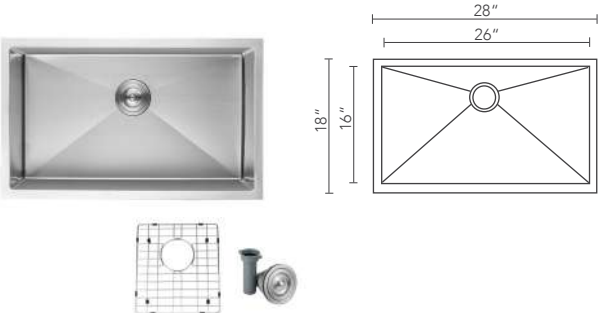


ITEM CODE: CUHM 2318



ITEM CODE	CUHM 2318		
DIMENSION	23"x18"		
BOWL DEPTH	10 Inch	SIPHON HOLE	3-1/2"
CABINET SIZE	27 Inch	THICKNESS	18 Gauge
FINISHING	Shiny-Brillant	MSRP	343

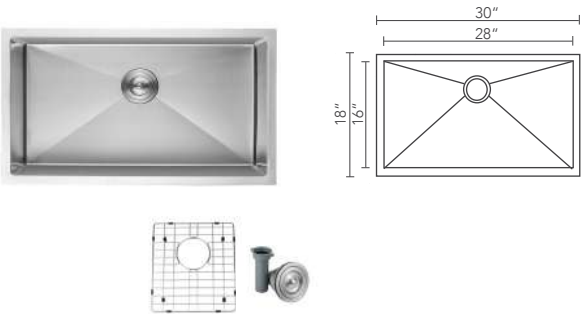
- PRICE INCLUDE STRAINER AND GRID



ITEM CODE	CUHM 2818		
DIMENSION	28"x18"		
BOWL DEPTH	10 Inch	SIPHON HOLE	3-1/2"
CABINET SIZE	34 Inch	THICKNESS	18 Gauge
FINISHING	Shiny-Brillant	MSRP	415

- PRICE INCLUDE STRAINER AND GRID

NEW



ITEM CODE	CUHM 3018		
DIMENSION	30"x18"		
BOWL DEPTH	10 Inch	SIPHON HOLE	3-1/2"
CABINET SIZE	34 Inch	THICKNESS	18 Gauge
FINISHING	Shiny-Brillant	MSRP	429

- PRICE INCLUDE STRAINER AND GRID



ITEM CODE: CUHM 3018



GRID



SINK DETAIL

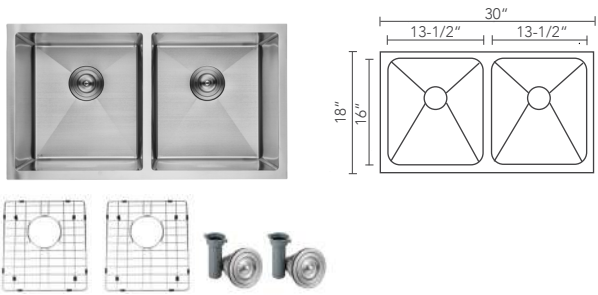


STRAINER

NEW

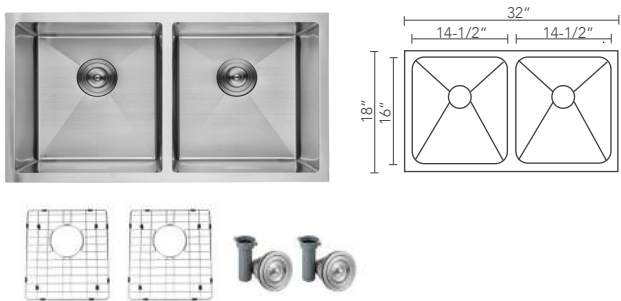


ITEM CODE: CUHM 3018D



ITEM CODE	CUHM 3018D		
DIMENSION	30"x18"		
BOWL DEPTH	10 Inch	SIPHON HOLE	3-1/2"
CABINET SIZE	34 Inch	THICKNESS	18 Gauge
FINISHING	Shiny-Brillant	MSRP	429

- PRICE INCLUDE STRAINER AND GRID



ITEM CODE	CUHM 3218D		
DIMENSION	32"x18"		
BOWL DEPTH	10 Inch	SIPHON HOLE	3-1/2"
CABINET SIZE	34 Inch	THICKNESS	18 Gauge
FINISHING	Shiny-Brillant	MSRP	429

- PRICE INCLUDE STRAINER AND GRID

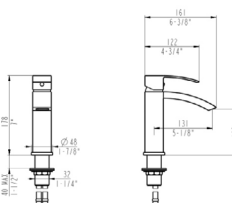


F A U C E T

H A N D L E

FAUCET









NEW

ITEM CODE	PICTURE	DRAWING	FINISH	MSRP
88421			CHROME	248
88503B1			CHROME	282
88420			CHROME	208
88501B5			CHROME	383
88402			CHROME	218
12119B3			CHROME	191
SDP1			CHROME	40

- All DIVINE faucets CUPC certificate

HANDLE

NEW

ITEM CODE	PICTURE	COLOR	CENTRE TO CENTRE	WEIGHT	MSRP
DV765128143		BLACK NICKEL BRUSHED	128	147	13
DV765192143			192	220	19
DV801128140		OXIDATION BRUSHED	128	38	5
DV801192140			192	44	6
DV2323128195		BRUSHED NICKEL	128	58	6
DV2323192195			192	78	8
DV1120-96		BRUSHED NICKEL	96	125	9
DV1120-160			160	169	12
DV21471		BRUSHED NICKEL	128	45	5
DV811128195		BRUSHED NICKEL	128	120	10
DVPIN1901		BRUSHED NICKEL	N/A	46	4
DVSW1902		AMERICAN SCREW	N/A		0.15

MOQ: 100 QTY.





DIVINE CABINetry INC.

925 Rue McCaffrey, Saint-Laurent, QC H4T 1N3 TEL: (514)600-5998 FAX: (514)600-5122
www.divinecabinetry.com E-Mail: info@divinecabinetry.com